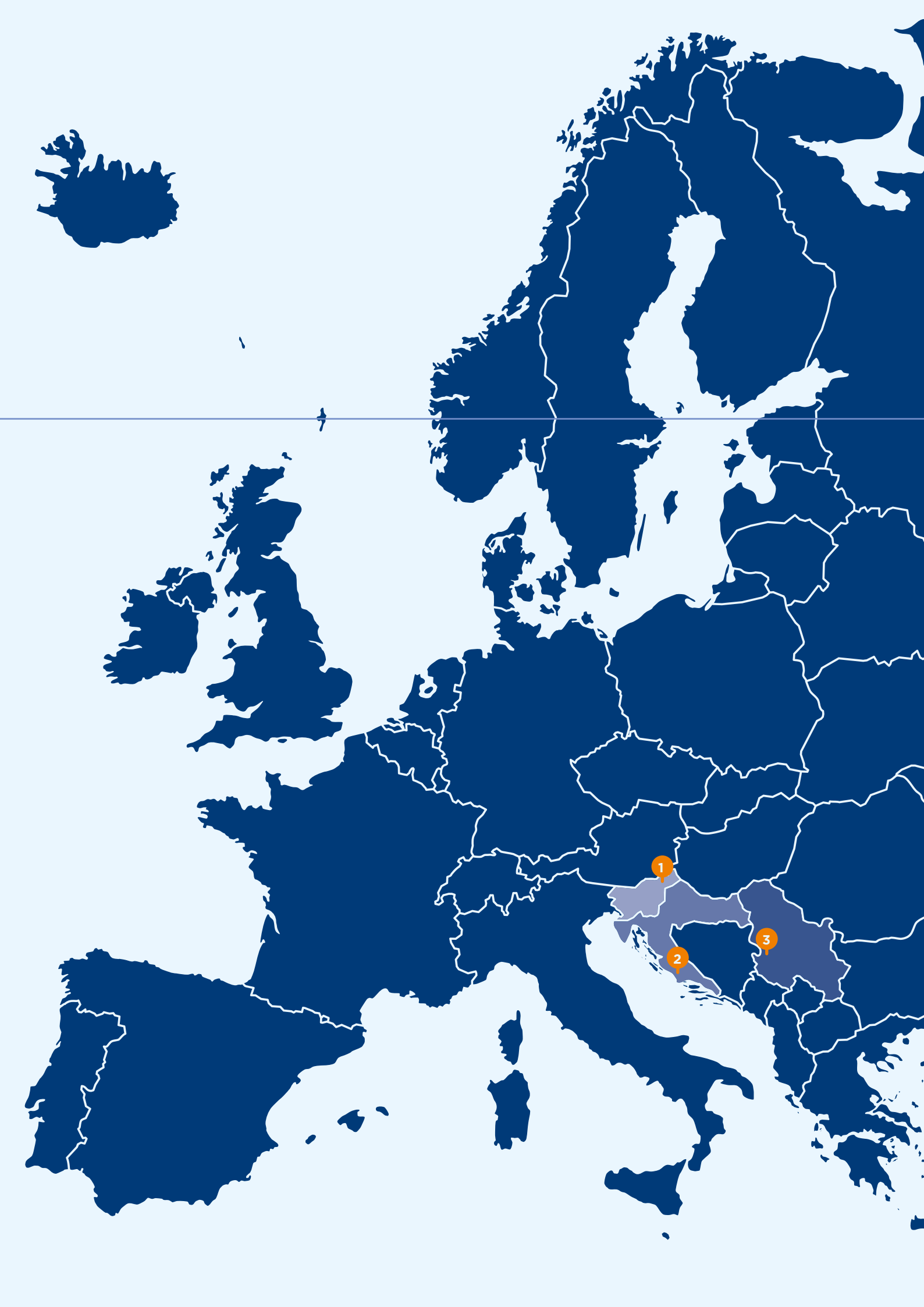




*Rolled
Products*



Our Passion. Innovation.

The processing of aluminium into advanced semi-finished products is both our business and our passion. For two centuries, we have been driven by innovation, development-oriented thinking, flexibility and versatility.

We work closely with and for our customers. Together, we develop new alloys, provide expert guidance and continuously seek innovative solutions to optimise our processes and products. Our sustainable business growth, ongoing modernisation, expansion of production capacities, and broad portfolio of products and alloys are a strong assurance that, with us, you gain a reliable and long-term business partner.

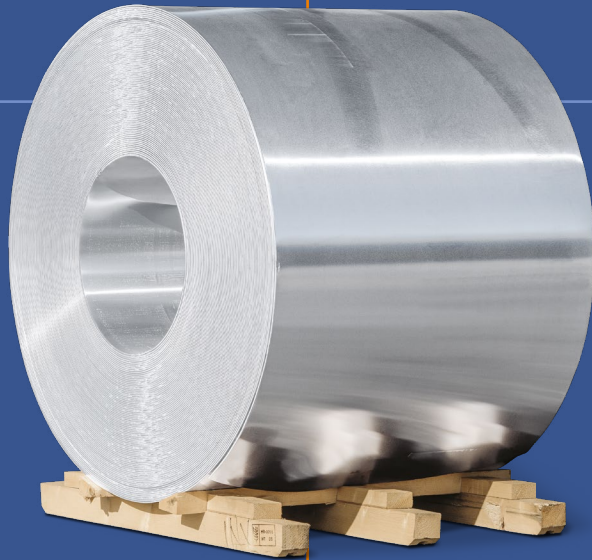
Rolling represents one of our core production segments. Our technologically advanced rolled semi-finished products are manufactured at three production sites in three different countries. Over the past few years, our production volumes have increased significantly and continue to grow. This growth strengthens our reliability, flexibility and distribution capabilities.

By combining the advanced expertise of our development specialists with state-of-the-art equipment, we produce premium-quality cold-rolled strips, tread plates, circles and shapes, as well as hot- and cold-rolled sheets.

1 IMPOL
Slovenska Bistrica, Slovenia

2 IMPOL TLM
Šibenik, Croatia

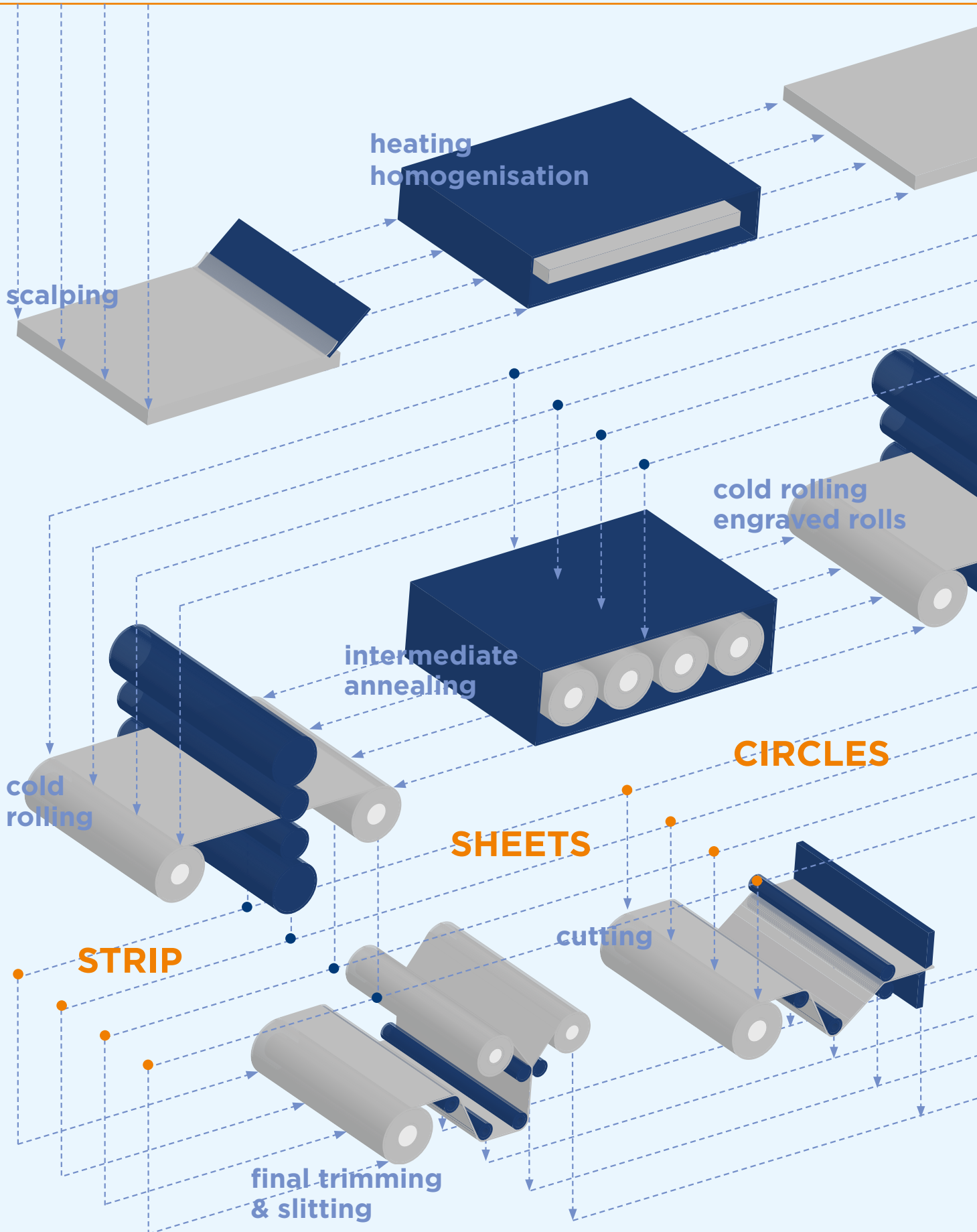
3 IMPOL SEVAL
Sevojno, Serbia

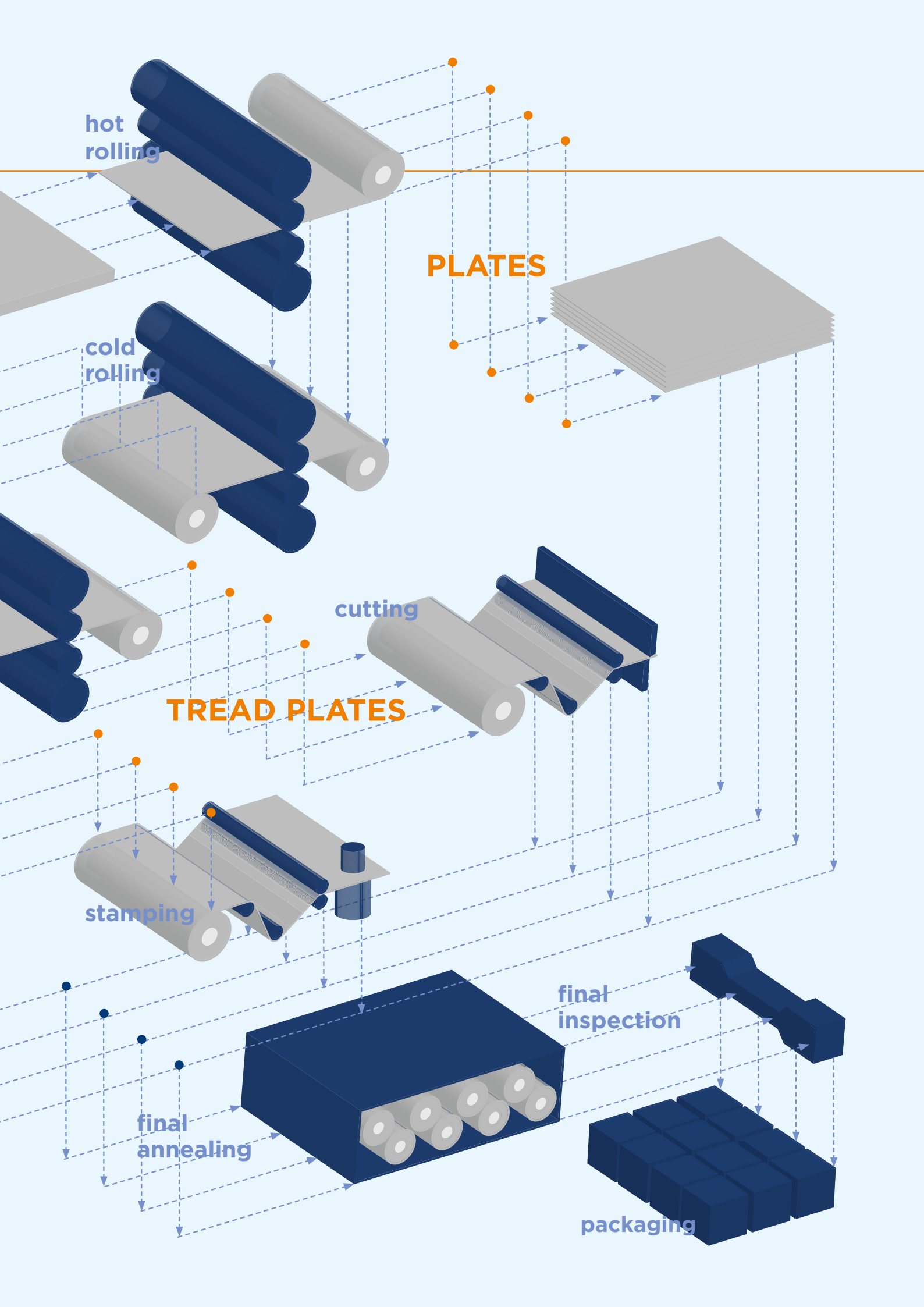


The largest segment of aluminium product

The basic manufacturing procedures are hot and cold rolling of aluminium and its alloys, where hot rolled strips serve as the source material for cold rolling. In addition to standard tempers and mechanical properties, entirely specific tempers, properties and quality of rolled products can be achieved through controlled cold working and heat treatments. The finally rolled coils are split into various widths with modern slitting lines. Sheet is obtained by cutting strips to lengths on cutting lines with a built-in roller straightener.

Process





hot rolling

PLATES

cold rolling

cutting

TREAD PLATES

stamping

final annealing

final inspection

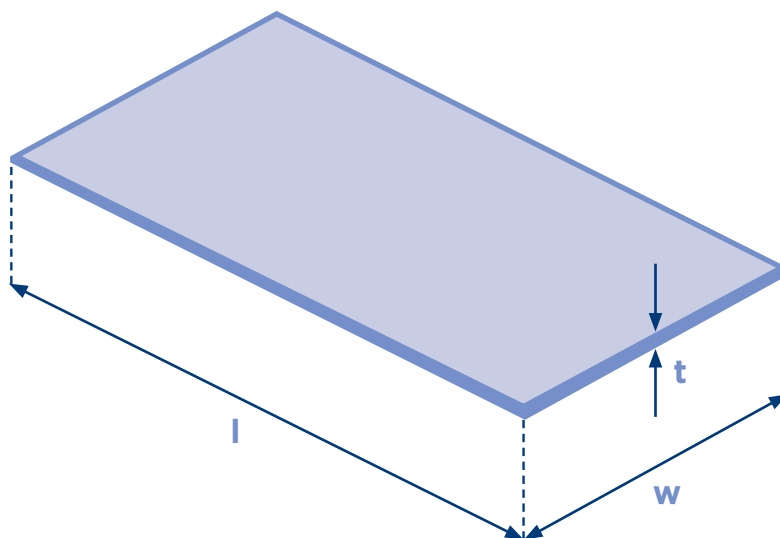
packaging



Rolled Aluminium by Main Groups

- Aluminium sheets
- Aluminium coils
 - plain
 - embossed
 - prepainted
- Aluminium tread plates
- Aluminium circles and shapes
- Aluminium plates

SHEETS



EN AW-xxxx	temper	surface finish	thickness**[mm]	width**[mm]	length**[mm]
selected alloys in series 1000	O <i>soft</i>	mill finish	0.4 - 5.0	600 - 1525	600 - 6000
	H1x <i>strain hardened</i>	prepainted			
selected alloys in series 3000	H2x <i>strain hardened and partially annealed</i>	embossed			
	H3x <i>strain hardened and stabilised</i>	stucco D2010			
selected alloys in series 5000	H4x <i>strain hardened and laquered or painted</i>				
	DDQ* <i>available for selected alloys and tempers</i>				

*FOR SELECTED ALLOYS AND TEMPERS

**LIMITATIONS ON SELECTABLE SIZES MAY APPLY

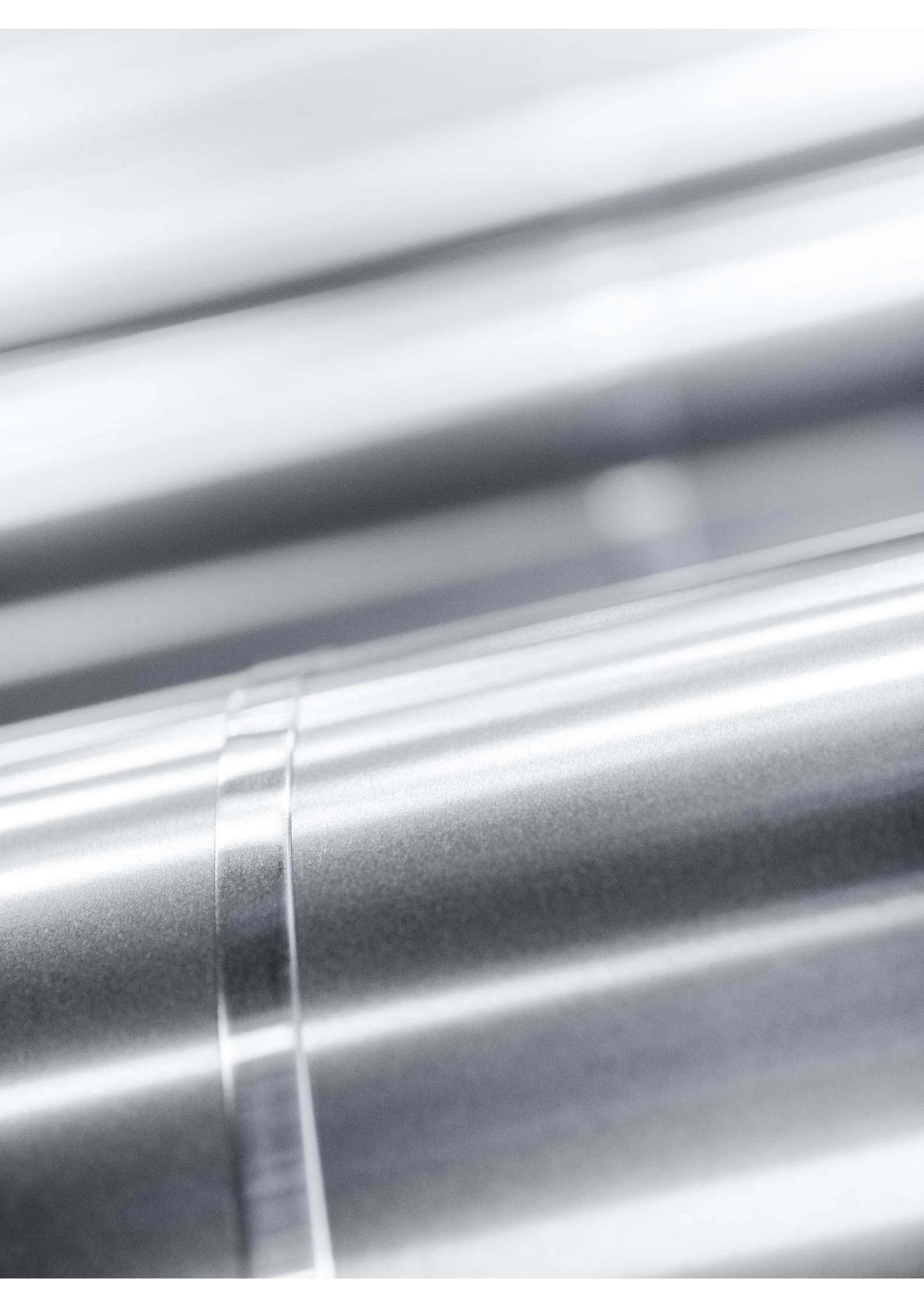
tension levelling

available for selected sizes

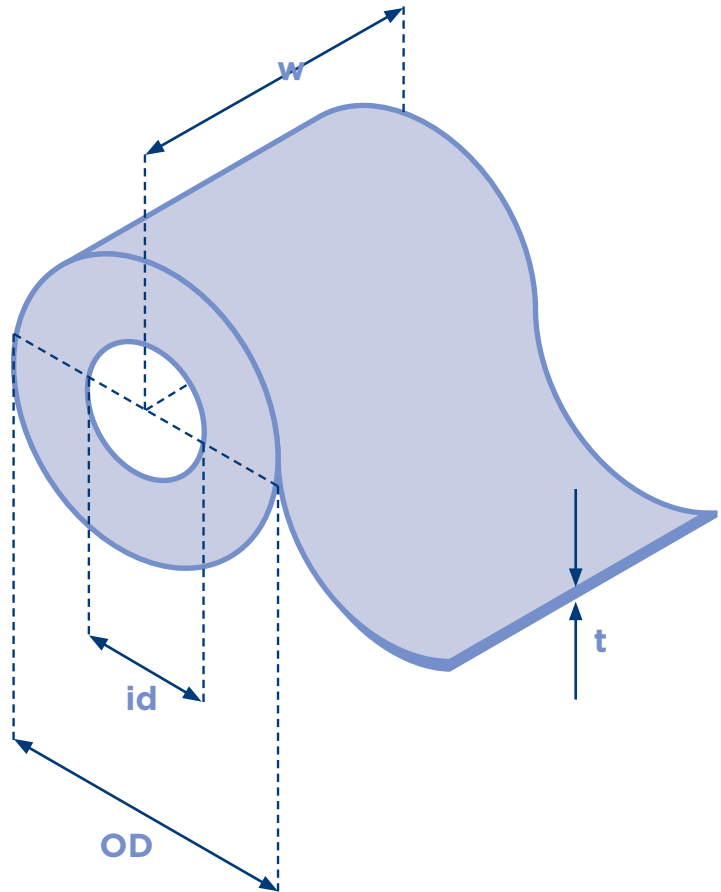
surface protection

PVC foil surface protection of various types available for selected sizes and tempers

Paper interleaves available for selected sizes



COILS



EN AW-xxxx	temper	surface finish	thickness [mm]	width [mm]	internal diameter [mm]	core type
selected alloys in series 1000	O <i>soft</i>	mill finish	0.5 - 4.0	50 - 1.500	500/508	cardboard*
	H1x <i>strain hardened</i>	prepainted			600/608	without core
selected alloys in series 3000	H2x <i>strain hardened and partially annealed</i>	embossed	0.5 - 4.0	50 - 1.500	400/406	without core
	H3x <i>strain hardened and stabilised</i>	stucco D2010			300/304	
selected alloys in series 5000	H4x <i>strain hardened and laquered or painted</i>	stucco D2011	0.5 - 4.0	50 - 1.500		without core
	DDQ* <i>available for selected alloys and tempers</i>					

*FOR SELECTED ALLOYS AND TEMPERS

tension levelling

surface protection

available for selected sizes

PVC foil surface protection of various types available for selected sizes and tempers

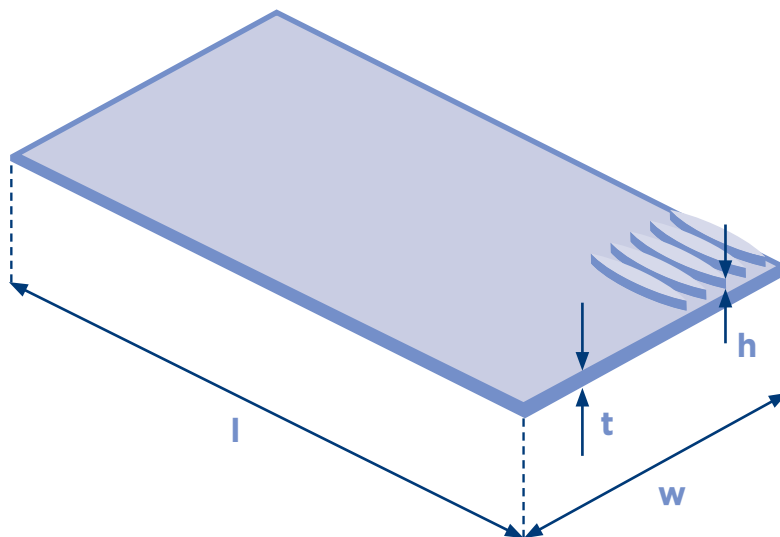
COIL SIZES

ID [mm]	OD range** [mm]	weight per mm of width** [kg/mm]
508 610	750 - 1740	0.7 - 5.8

**LIMITATIONS ON SELECTABLE SIZES MAY APPLY. COIL SIZES MAY VARY DEPENDING ON ALLOY, TEMPER AND COIL SIZE. PLEASE ASK FOR DETAILED COIL SIZES ACCORDING TO YOUR SPECIFIC REQUIREMENTS.



TREAD PLATES



EN AW-xxxx	temper	surface finish	thickness [mm]	pattern height [mm]	width [mm]	length [mm]
selected alloys in series 1000	H114 H224 H244	two bar (duet) five bar (quintet) diamond	1.50 - 5.00	thickness = 1.50 0.50 or 1.00	600 - 1525	600 - 6000
selected alloys in series 3000	<i>strain hardened and partially annealed</i>	thickness = 2.00 1.00 or 1.50				
selected alloys in series 5000		thickness > 2.00 1.50				

tension levelling

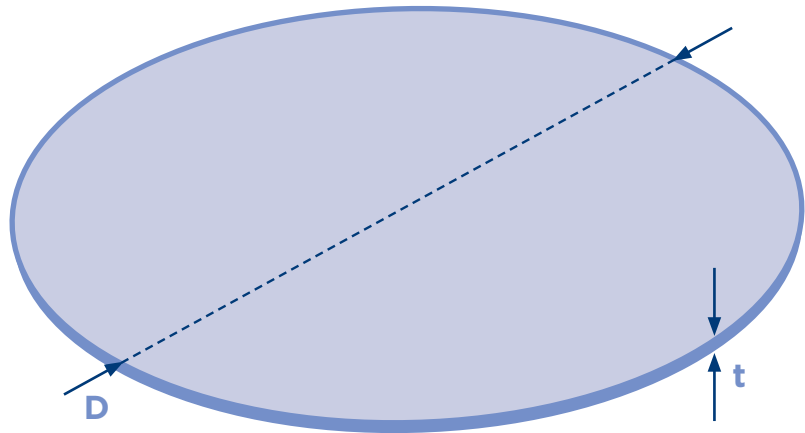
surface protection

/

Paper interleaves on request for selected widths



CIRCLES AND SHAPES

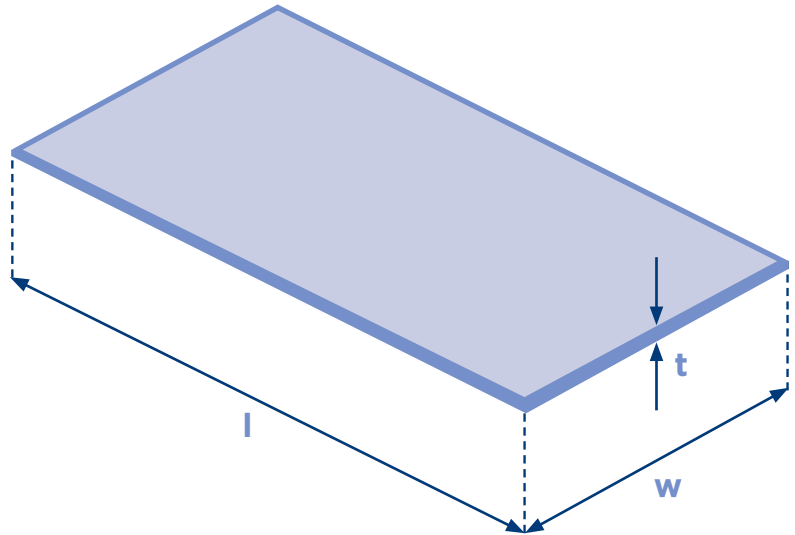


EN AW-xxxx	temper	surface finish	thickness [mm]	sizing
selected alloys in series 1000	O <i>soft</i>	mill finish	1.00 - 5.00	<i>sizes chart available on request</i>
	H1x <i>strain hardened</i>			
selected alloys in series 3000	DDQ* <i>available for selected alloys and tempers</i>			
selected alloys in series 4000				
selected alloys in series 5000				
selected alloys in series 6000				
selected alloys in series 8000				

*AVAILABLE ON REQUEST



PLATES



EN AW-xxxx	temper	surface finish	thickness [mm]	width*[mm]	length*[mm]
selected alloys in series 1000	O <i>soft</i>	hot rolled	6 - 300	Up to 1550	Up to 6000
selected alloys in series 5000	F <i>as fabricated</i>				
selected alloys in series 6000					

*LIMITATIONS ON SELECTABLE SIZES MAY APPLY

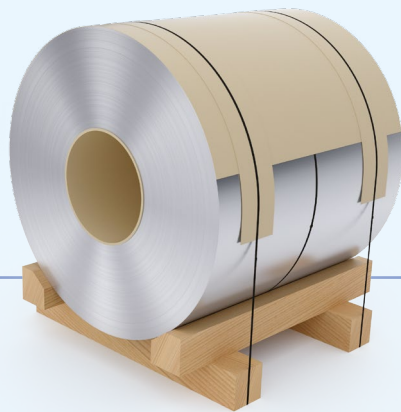
tension levelling	surface protection
available for selected sizes	/

Packaging

Our products are packed according to the customer's wishes and our capabilities. Impol's standard packing methods include packing onto pallets, into crates or into boxes. Special packaging is also available on agreement. All packaging is returnable.

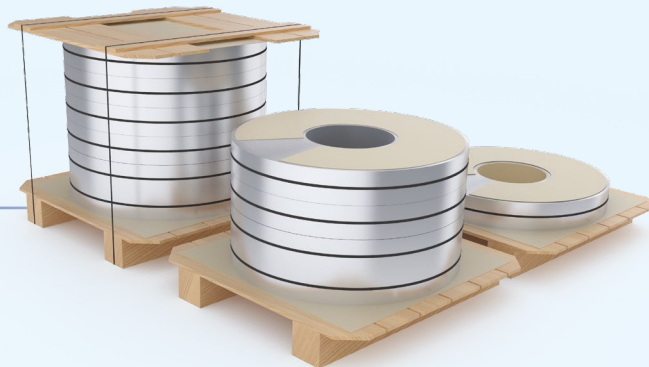
Each shipment is accompanied with a certificate of quality, which also proves the suitability of the materials.

**ONE COIL ON A PALLET
AXIS HORIZONTAL**



**TWO OR MORE
COILS ON A PALLET,
AXIS HORIZONTAL
CARDBOARD
INTERLEAVES**

**TWO OR MORE
COILS ON A PALLET,
AXIS VERTICAL
CARDBOARD
INTERLEAVES**



**TWO OR MORE
COILS ON A PALLET,
AXIS VERTICAL
WOODEN
INTERLEAVES**

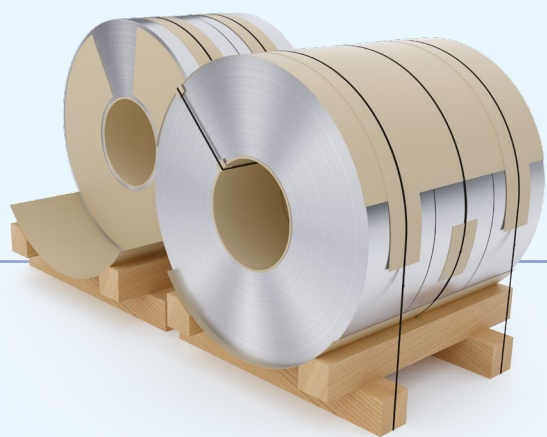
**COILS FOR
CONTAINER SHIPPING**



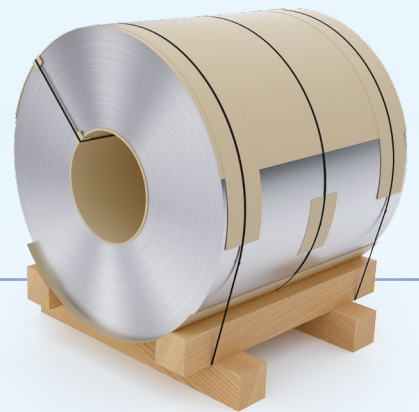
**COLD ROLLED
SHEETS AND TREAD
PLATES, PLATES**

*EXAMPLES OF DIFFERENT PACKAGING TYPES

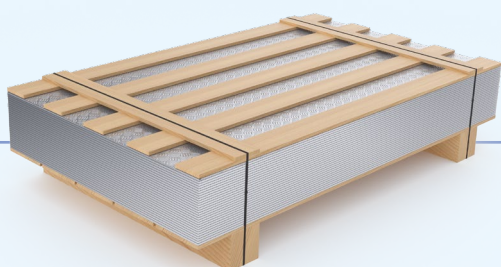
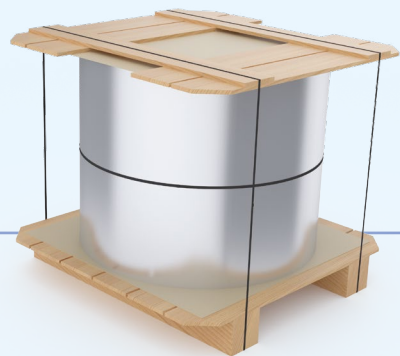
*PACKAGING FOR OVERSEAS SHIPPING ALSO AVAILABLE



**COILS FOR PAINTING
WITH OR WITHOUT
CARDBOARD CORE**



**ONE COIL ON
A PALLET AXIS
VERTICAL**



CIRCLES



IATF 16949

BVQI SINCE 2018

ISO 9001

BVQI SINCE 1992

ISO 14001

BVQI SINCE 2000

ISO 45001

BVQI SINCE 2000

ISO 50001

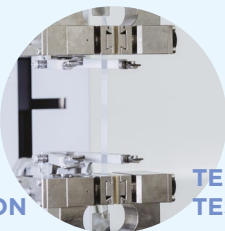
BVQI SINCE 2023

SA 8000

BVQI SINCE 2023



CHEMICAL
COMPOSITION



TENSILE
TESTING



DEEP
DRAWING
TESTING



SAMPLE
PREPARATION



METALLOGRAPHIC
RESEARCH



SCANNING ELECTRON
MICROSCOPE (SEM)

Standards and Chemical Composition

Our aluminium products are produced in different alloys according to European and international standards. Chemical composition, mechanical properties and tolerances of our products follow corresponding family of standards:

EN 515	Wrought products - Temper designations
EN 573-1,2,3,5	Chemical composition and form of wrought
EN 541	Rolled products for cans, closures and lids
EN 546-1,2,3,4	Foils
EN 602	Wrought products - Chemical composition of semi finished products used for the fabrication of articles for use in contact with foodstuff
EN 683-1,2,3	Finstock
AA	Aluminium Standards and Data

Our products comply with applicable European Union and other international legislation, directives, and other relevant regulatory requirements. We systematically monitor regulatory developments and updates to ensure that our products remain compliant with current legal and regulatory obligations. Where necessary, compliance is verified through testing conducted by accredited external laboratories. Compliance declarations and statements are available on request for our customers.

Ordering

For the quick processing of your inquiry we kindly ask you to provide us with the following data:

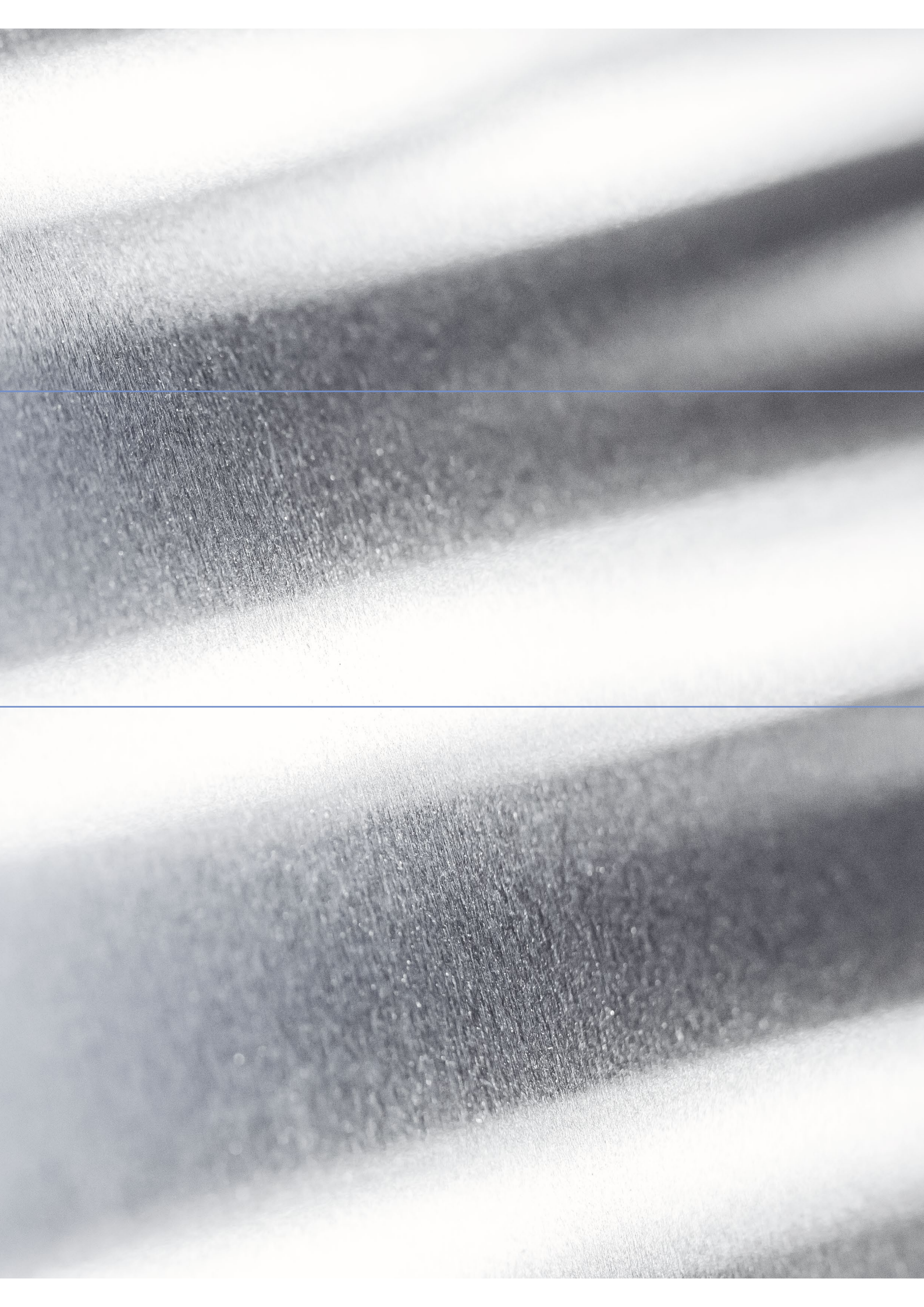
- Product type
- Alloy and temper or desired mechanical properties
- Dimensions and desired tolerances
- For coils, coil size (desired weight) and/or inside and outside diameter
- Purpose of use or desired mechanical properties
- Quantity





Aluminium is a reason to believe in a zero waste future. About 75% of the aluminum produced at any time is still in use.







Partizanska 38
2310 Slovenska Bistrica, Slovenia

T: +386 2 845 3100
F: +386 2 818 1219

info@impol.si
www.impol.com