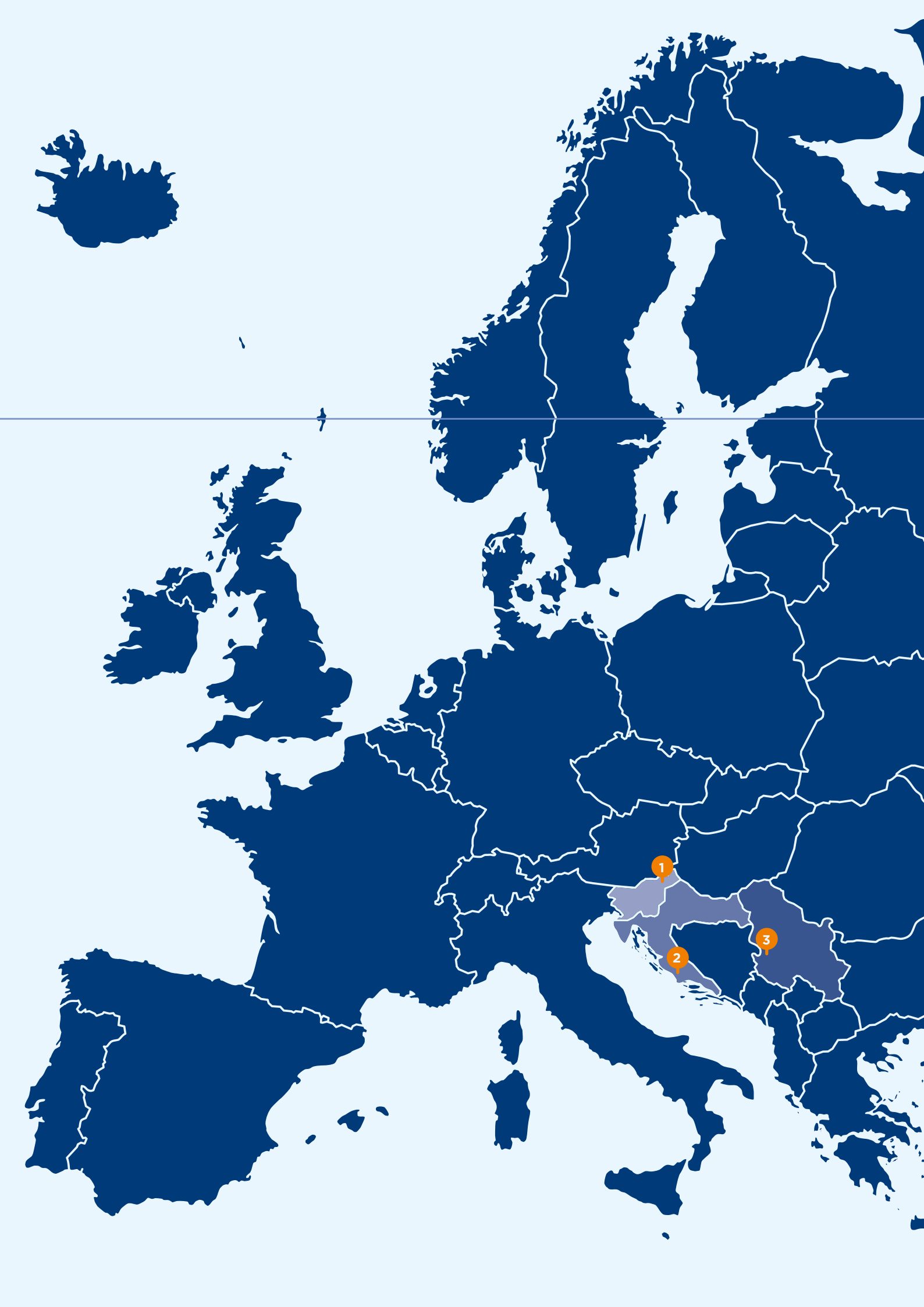




*Foils &
Thin Strips*



Our passion. Innovation.

The processing of aluminium into state-of-the-art semi-finished products is the core business and passion of the Impol Group. For two centuries, we have been guided by innovation, a strong development orientation, flexibility and versatility.

We create with and for our customers. Together, we develop new alloys, provide expert advice and seek advanced solutions for the optimisation of our processes and products. Our sustainable business growth, continuous modernisation, expanding production capacities, and wide range of products and alloys are a guarantee that we are a reliable business partner.

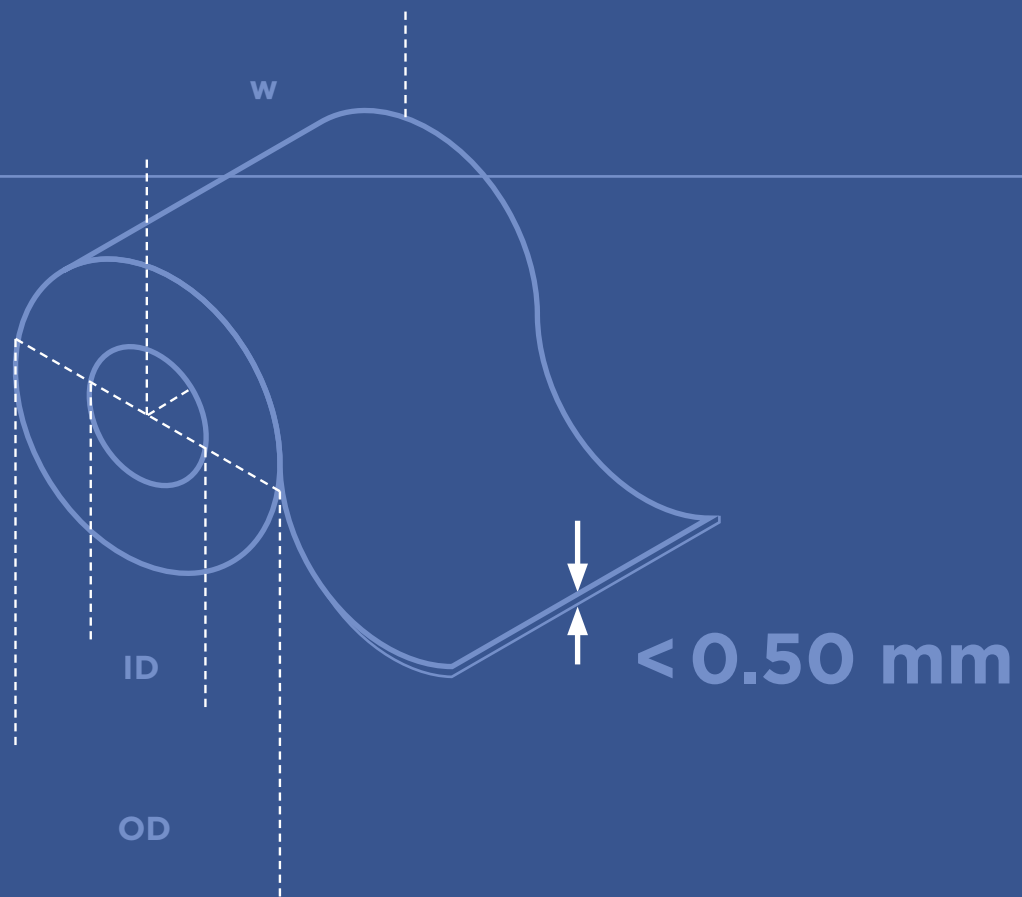
Rolling is one of our core production divisions, and foils are an important part of this division. Technologically advanced rolled semi-finished products are produced at two of our sites in two different countries. Our production has increased significantly in recent years and continues to grow. Growing sales provide us with stability and flexibility, while ensuring excellent distribution channels. The state-of-the-art expertise of our development specialists, combined with the most advanced equipment, enables us to produce high-quality foils and thin strips.

1 IMPOL
Slovenska Bistrica, Slovenia

2 IMPOL TLM
Šibenik, Croatia

3 IMPOL SEVAL
Sevojno, Serbia

Sustainable development



CORROSION-RESISTANCE

DEADFOLD PERFORMANCE

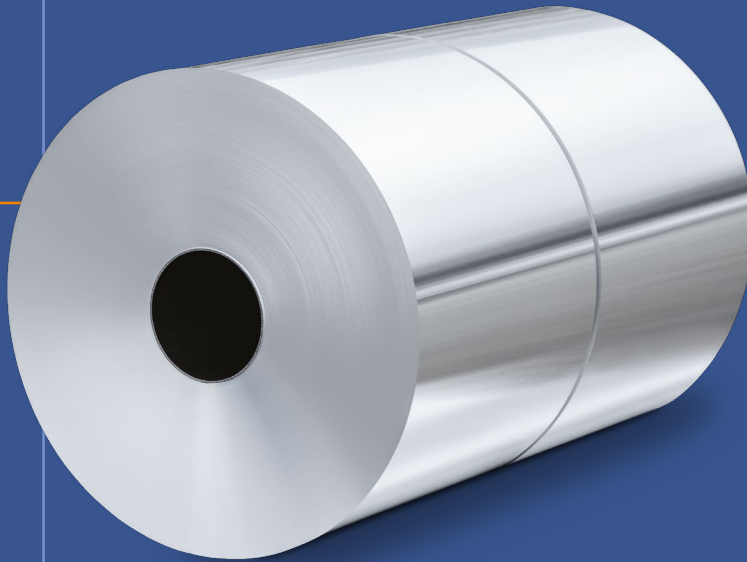
NON-TOXICITY AND HYGIENE

excellent prop

LIGHT AND AIR BARRIER

HIGH ELECTRICAL CONDUCTIVITY

HIGH REFLECTIVITY



Aluminium foils

The chemical compositions of alloys define their specific properties, but the following properties are common to all alloys:

- Aluminium does not react with the majority of organic substances.
- Aluminium is resistant to chemical reactions. Its resistance depends on individual compounds or its components.
- Aluminium has good corrosion resistance. Foils can be pre-treated or laminated to increase their resistance in salt media.
- Aluminium does not react with alimentary products.
- Aluminium is opaque.

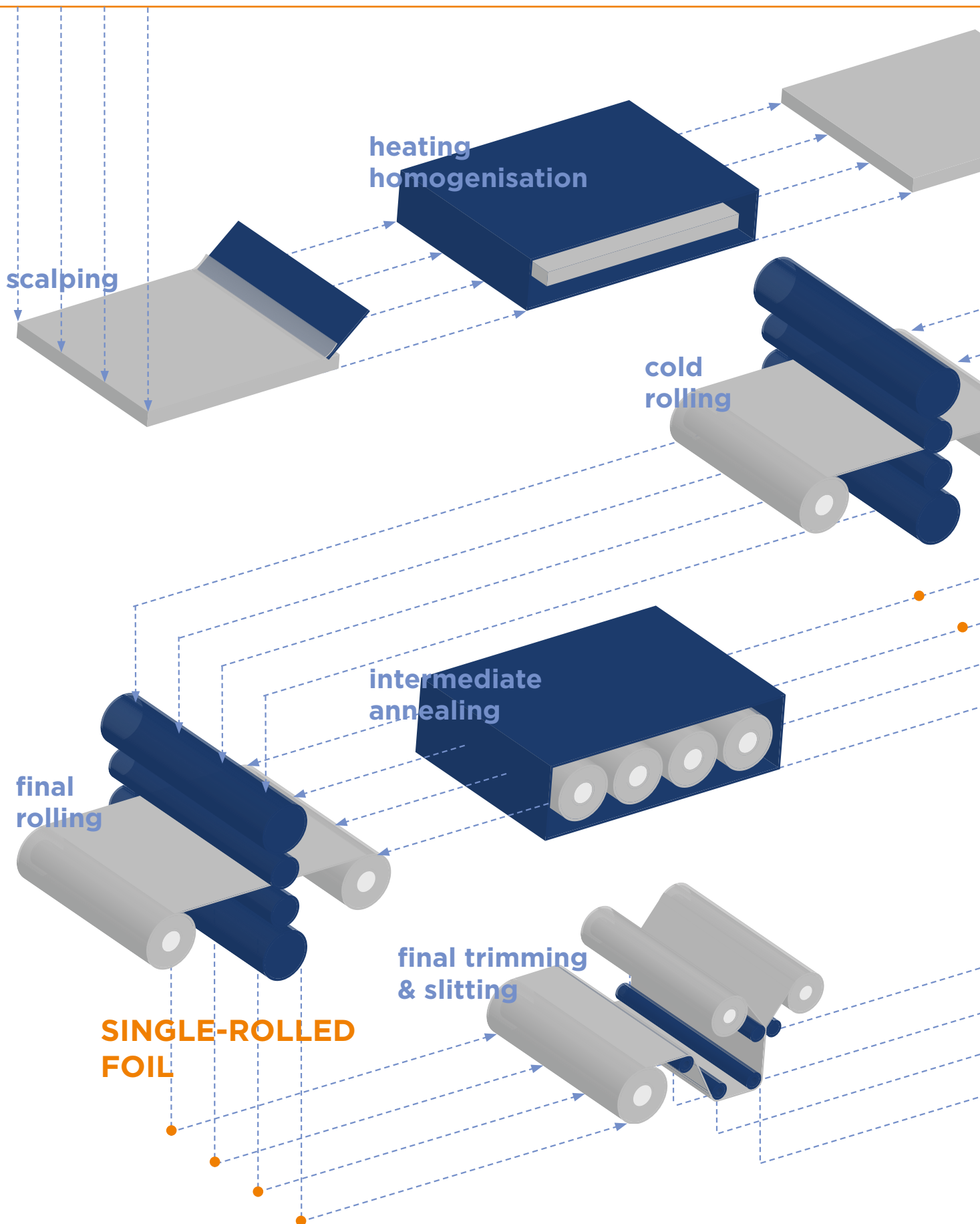
Applications of aluminium foils and thin gauge strips with a thickness below 0.50 mm:

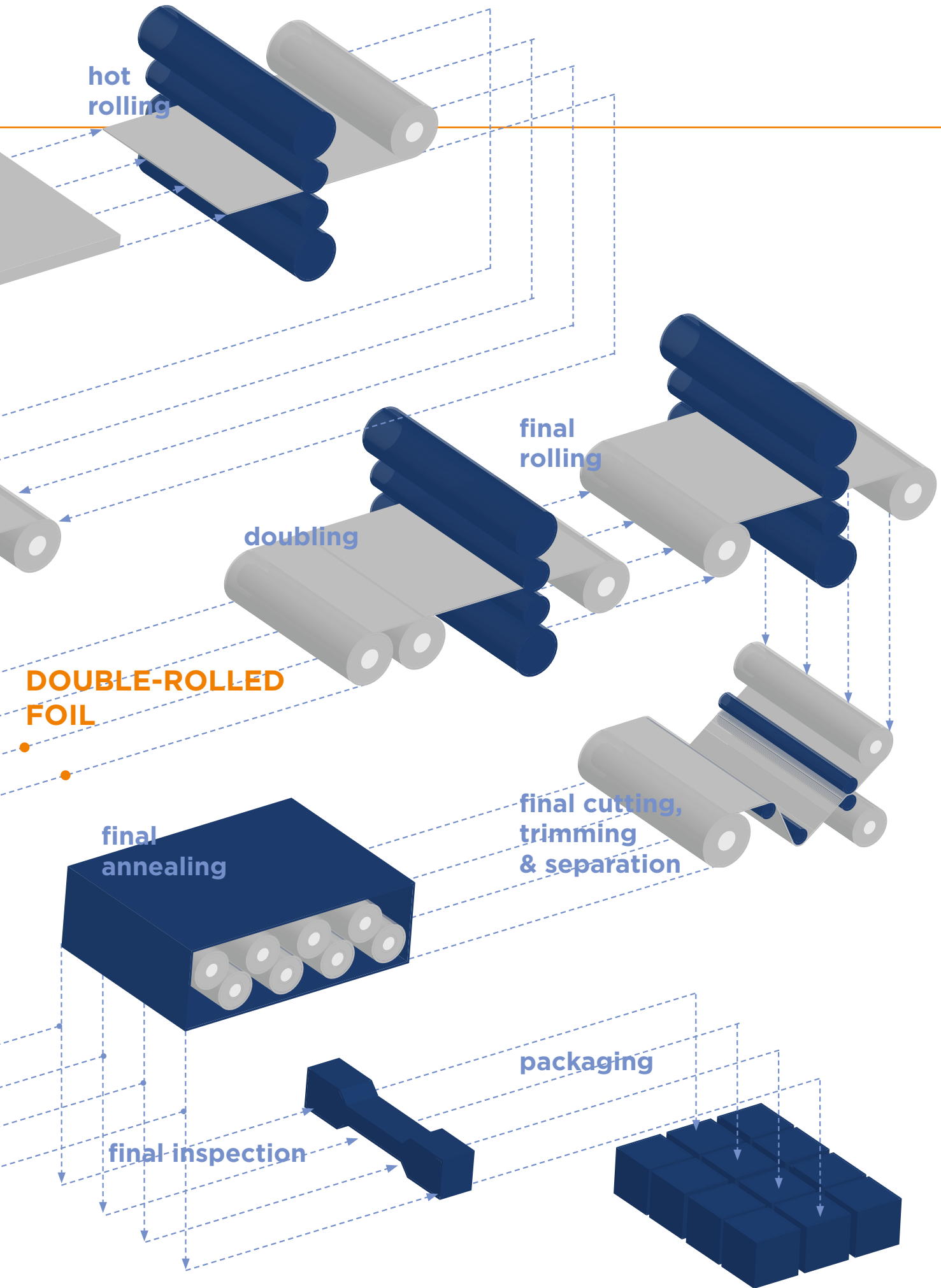
- Aluminium foil for food and beverage packaging
- Aluminium foil for pharmaceutical use
- Foil for technical use
- Container foil
- Household foil
- Finstock for heat exchangers
- Aluminium strips and foil for tubes
- Aluminium strips for profiling

LOW DENSITY

Properties
VERY ATTRACTIVE EFFECTS PROCESSING

Process



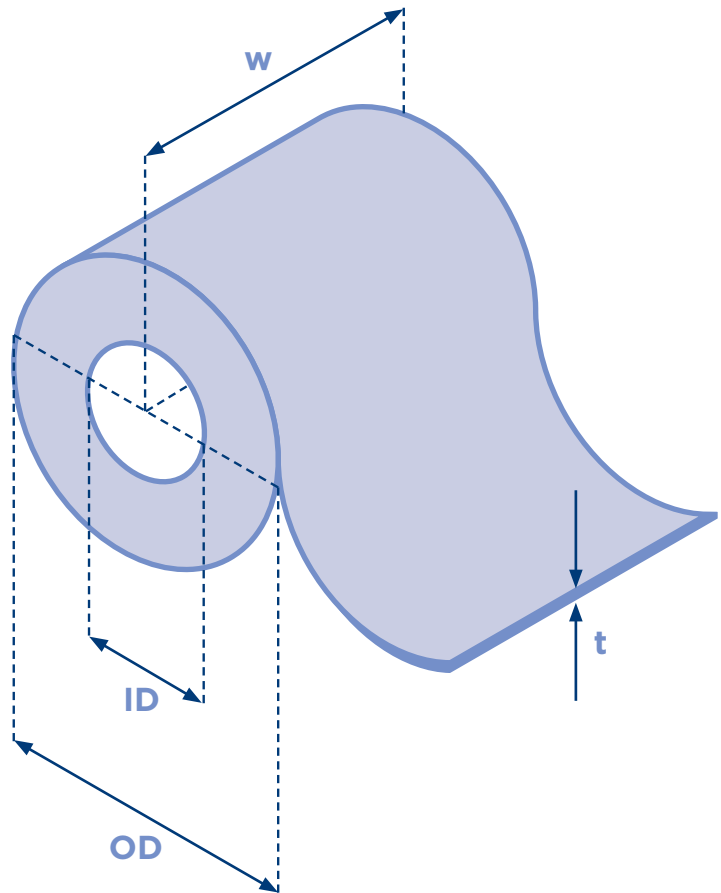




Aluminium Foil by Use

FOOD AND BEVERAGE PACKAGING

- Lids
- Wine capsules
- Bottle necks
- Coffee packaging
- Butter packaging
- Cheese packaging
- Confectionery (chocolate etc.)



EN AW-xxxx	temper	surface finish	thickness [mm]	width [mm]	internal diameter [mm]	core type
selected alloys in series 1000	O <i>soft</i>	bright/matt	0.008 - 0.070	250 - 1610*	150	Fe
selected alloys in series 8000						

*LIMITATIONS ON SELECTABLE SIZES MAY APPLY

Coil sizes

external diameter at 150 mm core [mm]	500 - 1000	weight [kg]	0.5 - 2.1 per mm of width
---------------------------------------	------------	-------------	---------------------------

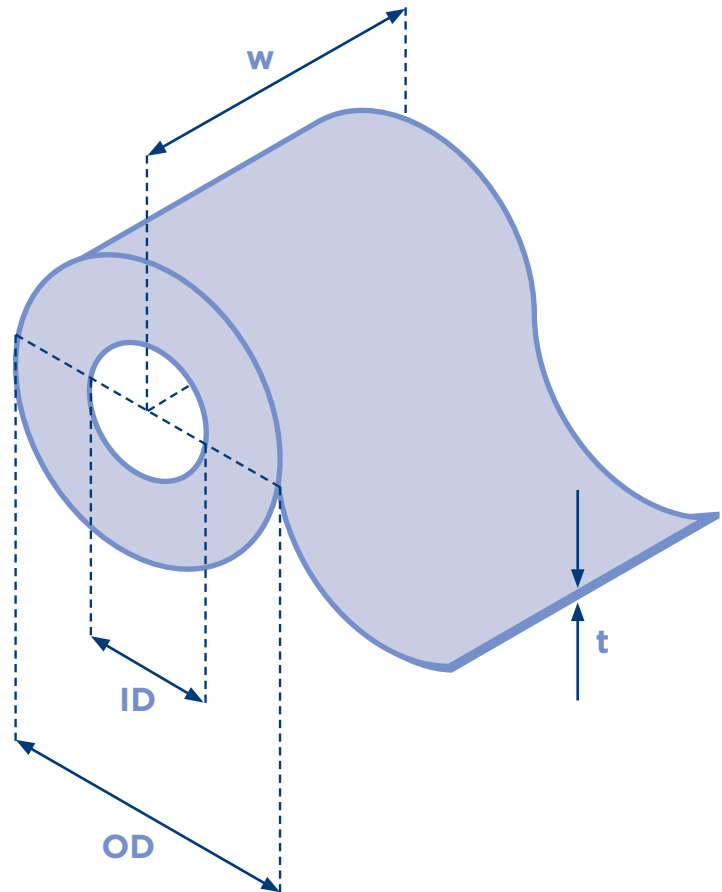


Aluminium Foil by Use

PHARMACEUTICAL

Typical examples:

- Blister
- Coldform



BLISTER

EN AW-xxxx	temper	surface finish	thickness [mm]	width [mm]	internal diameter [mm]	core type
selected alloys in series 1000	H1x <i>strain hardened</i>	bright/matt	0.020 - 0.030	250 - 1610	150	Fe
selected alloys in series 8000						

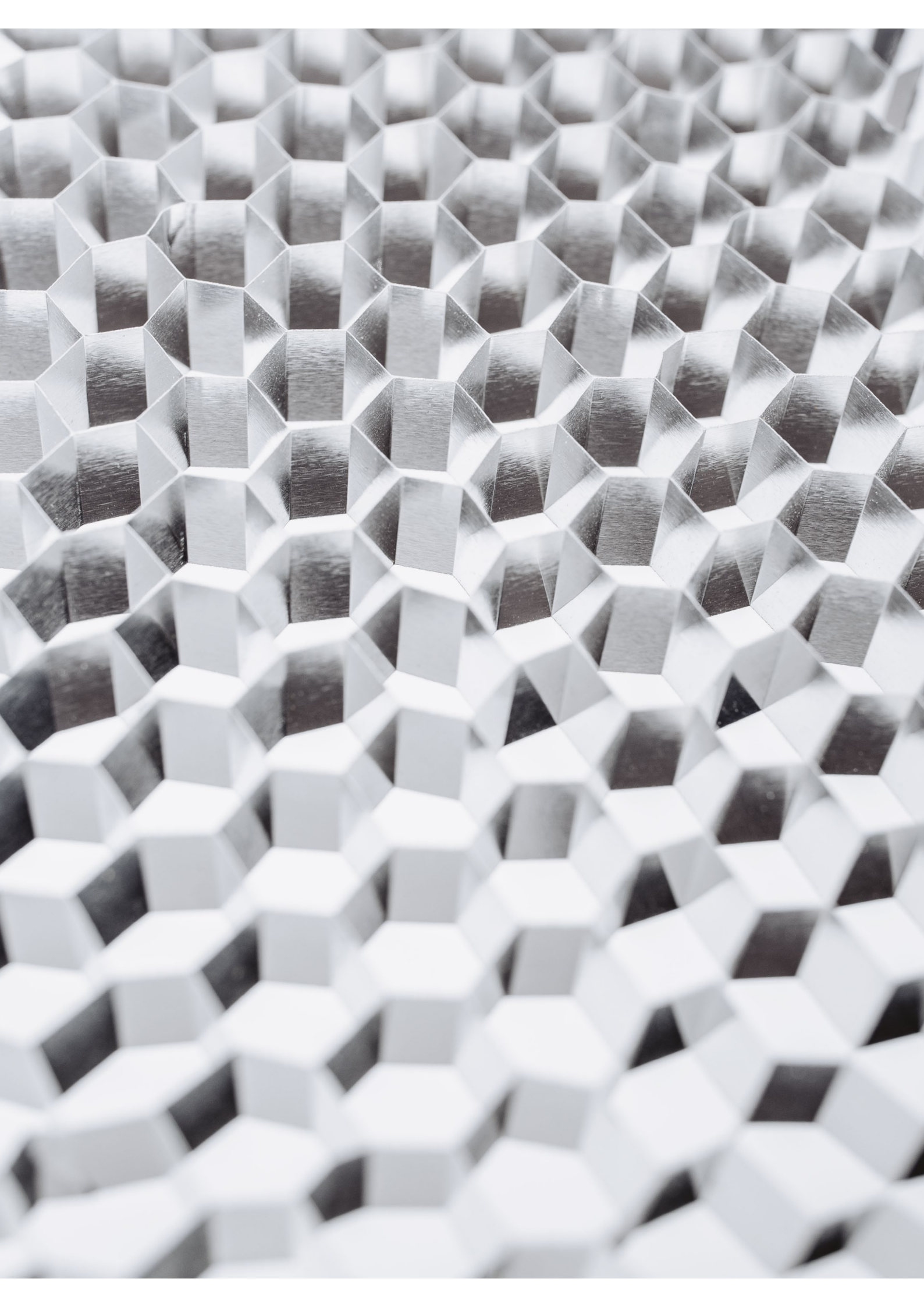
COLDFORM

EN AW-xxxx	temper	surface finish	thickness [mm]	width [mm]	internal diameter [mm]	core type
selected alloys in series 8000	DDQ <i>available for selected alloys and tempers</i>	bright/matt	0.045 - 0.060	250 - 1610	150	Fe

Coil sizes

external diameter at 150 mm core [mm] 550 - 1000

weight [kg] 0.6 - 2.1 per mm of width

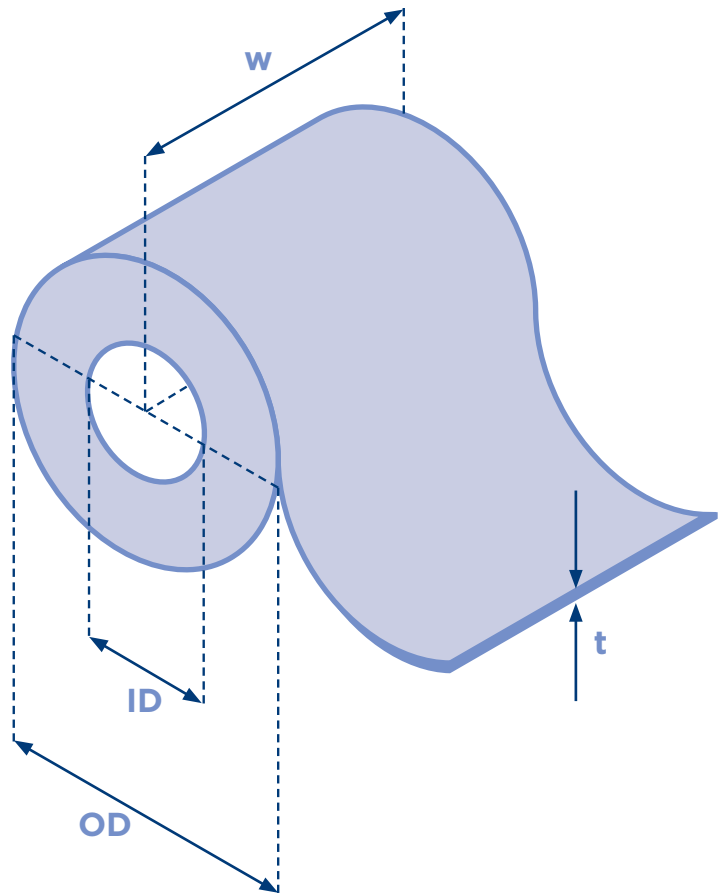


Aluminium Foil by Use

TECHNICAL

Typical examples:

- Cable wrapping
- Insulations
- Adhesive tapes
- Honeycomb



DOUBLED FOIL

EN AW-xxxx	temper	surface finish	thickness [mm]	width [mm]	internal diameter [mm]	core type
selected alloys in series 1000	O <i>soft</i>	bright/matt	0.008 - 0.070	250 - 1610	150	Fe
selected alloys in series 8000	H1x <i>strain hardened</i>					
	H24 <i>strain hardened and partially annealed</i>					

SINGLE-ROLLED FOIL

EN AW-xxxx	temper	surface finish	thickness [mm]	width [mm]	internal diameter [mm]	core type
selected alloys in series 1000	O <i>soft</i>	mill finish	0.050 - 0.100	150 - 1400	150	Fe
	H1x <i>strain hardened</i>				76	Al
selected alloys in series 3000					70	
selected alloys in series 5000						
selected alloys in series 8000						

Coil sizes

external diameter at 150 mm core [mm] 400 - 800

weight [kg] 0.3 - 1.3 per mm of width

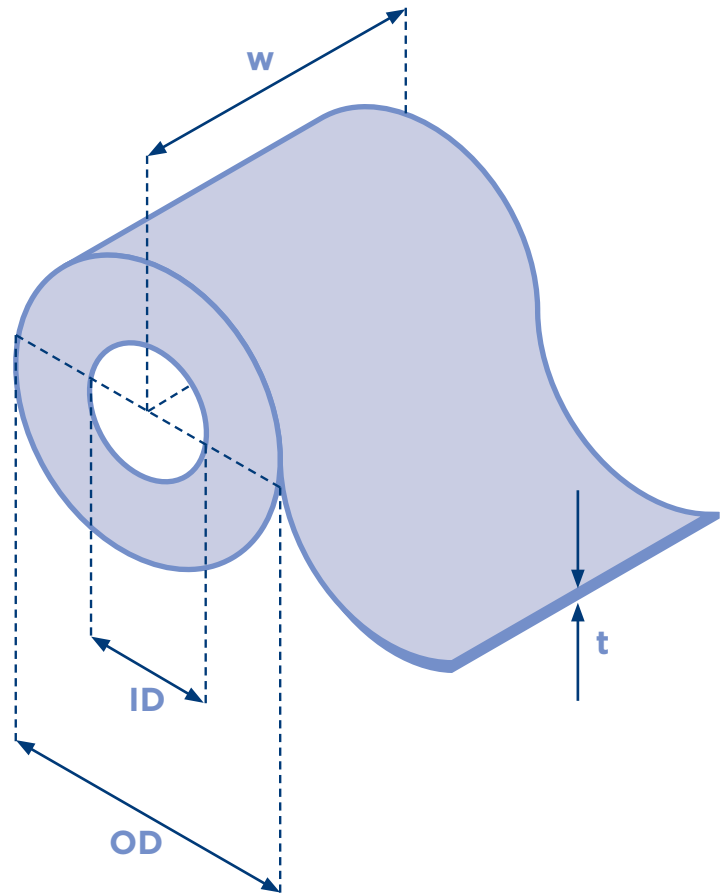


Aluminium Foil by Use

CONTAINER FOIL

Typical examples:

- Smooth wall containers
- Catering containers
- Pet food containers
- Candles



EN AW-xxxx	temper	surface finish	thickness [mm]	width [mm]	internal diameter [mm]	core type
selected alloys in series 3000	O <i>soft</i>	mill finish	0.050 - 0.150	150 - 1400	150 300	Fe
selected alloys in series 5000	DDQ <i>available for selected alloys and tempers</i>					
selected alloys in series 8000						

Coil sizes

external diameter at 150 mm core [mm] 550 - 950

weight [kg] 0.6 - 1.9 per mm of width

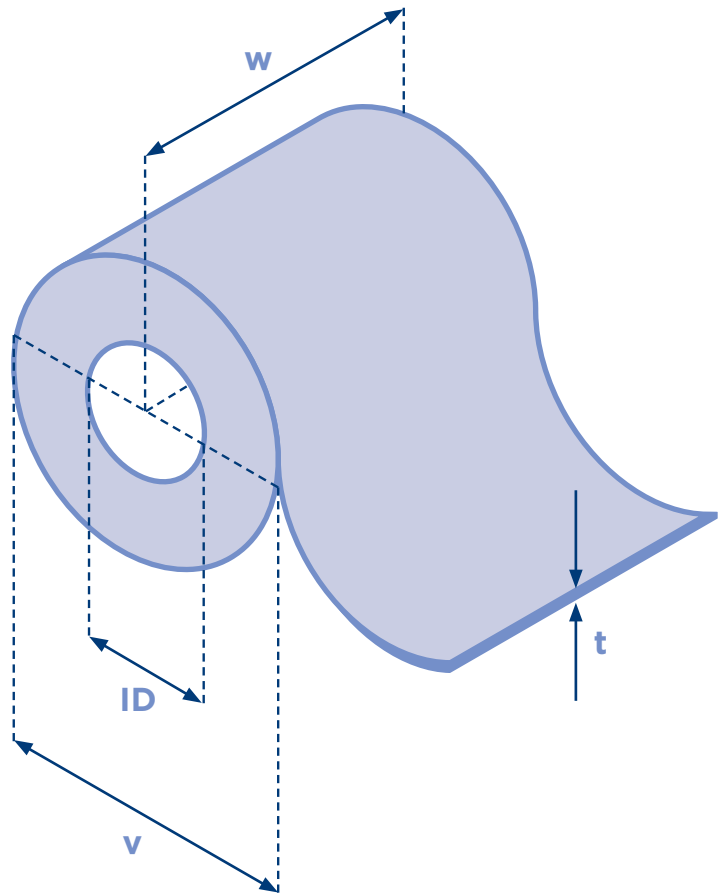


Aluminium Foil by Use

HOUSEHOLD FOIL

Typical examples:

- Household foil

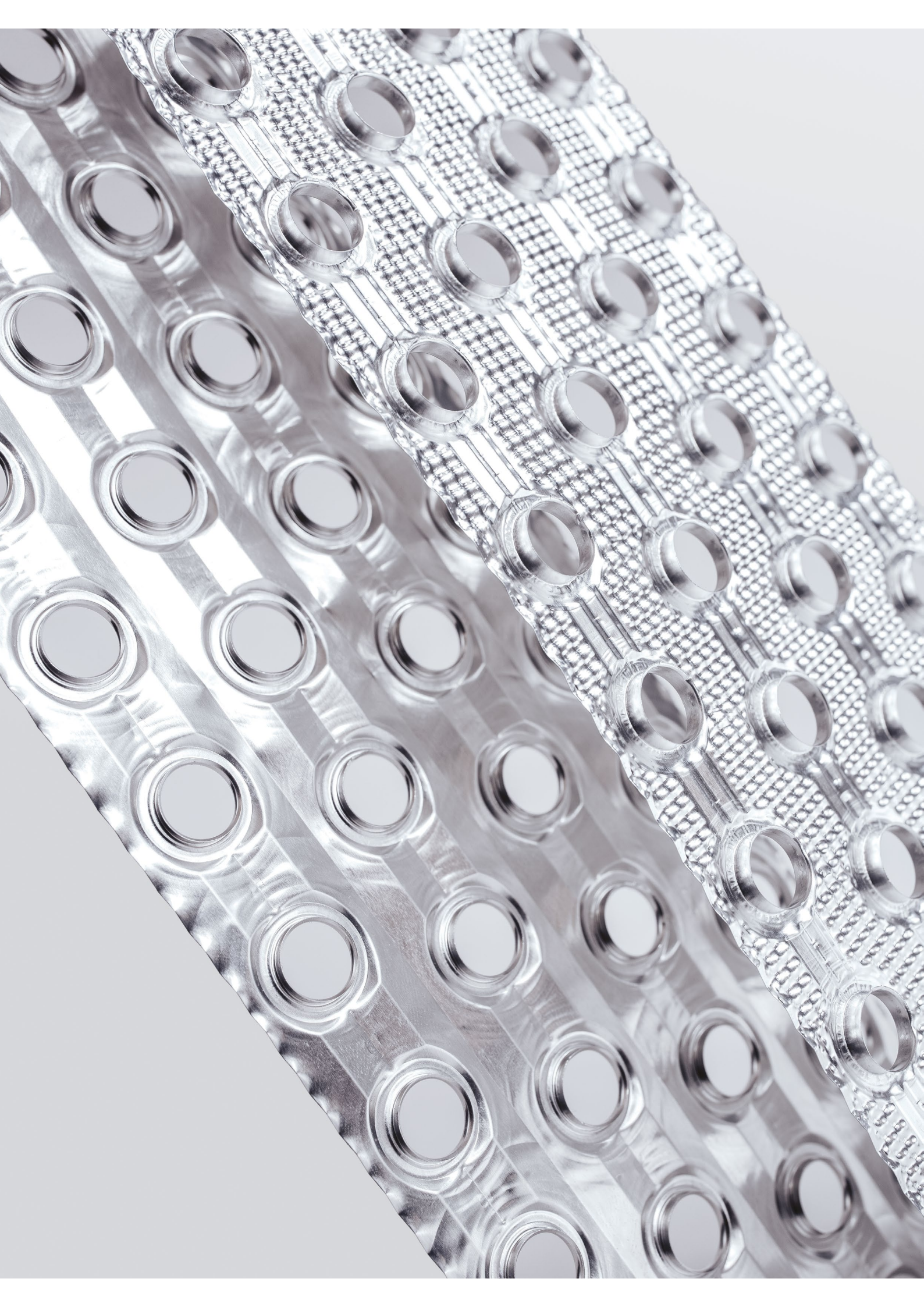


EN AW-xxxx	temper	surface finish	thickness [mm]	width [mm]	internal diameter [mm]	core type
selected alloys in series 8000	O <i>soft</i>	bright/matt	0.009 - 0.020	min. 250	150	Fe

Coil sizes

external diameter at 150 mm core [mm] 550 - 1000

weight [kg] 0.6 - 2.1 per mm of width

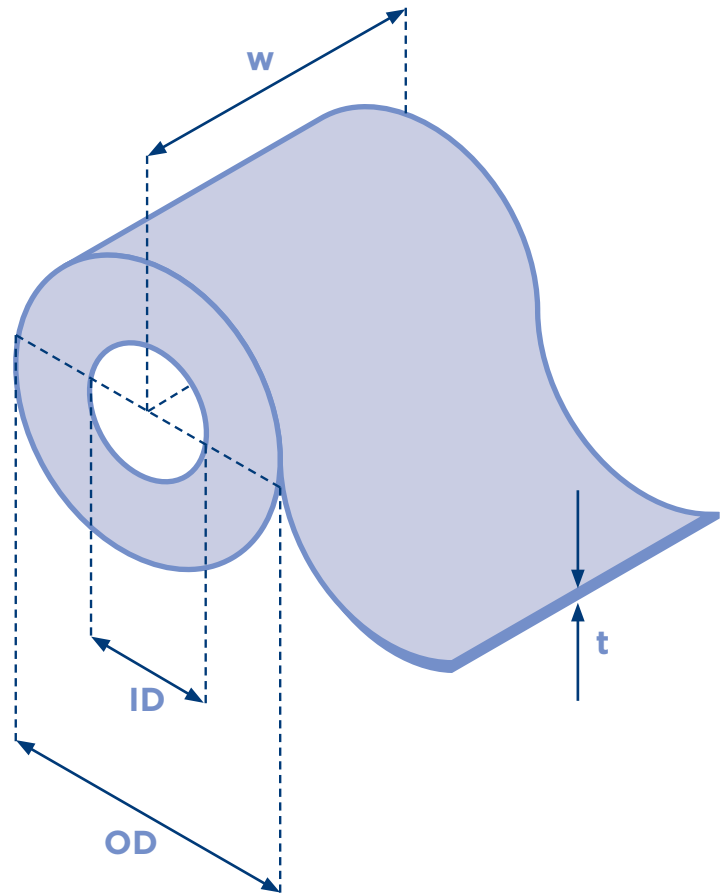


Aluminium Foil by Use

FINSTOCK

Typical examples:

- Heating, ventilation and air conditioning (HVAC)
- Refrigeration systems
- Heat exchangers for power plants



EN AW-xxxx	temper	surface finish	thickness [mm]	width [mm]	internal diameter [mm]	core type
selected alloys in series 1000	O <i>soft</i>	mill finish	0.080 - 0.499	30 - 1400	150	Al Fe
selected alloys in series 3000	H1x <i>strain hardened</i>					
selected alloys in series 5000	H2x <i>strain hardened and partially annealed</i>					
selected alloys in series 8000	DDQ <i>available for selected alloys and tempers</i>					

Coil sizes

external diameter at 150 mm core [mm] 690 - 940

weight [kg] 0.7 - 1.8 per mm of width

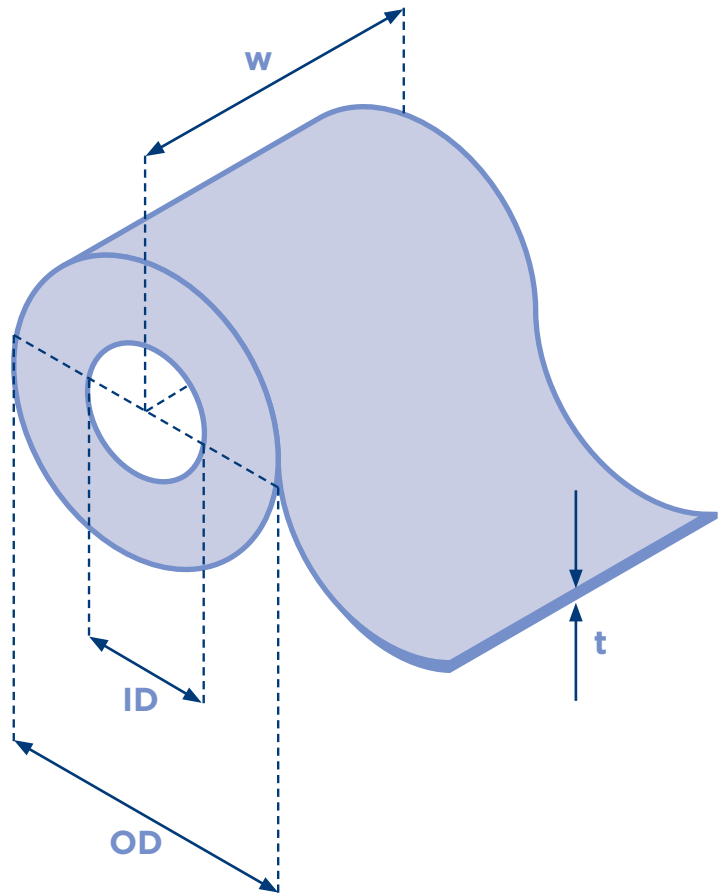


Aluminium Foil by Use

TUBES

Typical examples:

- Multilayer pipes (welded or overlapping)
- Flexible tubes



EN AW-xxxx	temper	surface finish	thickness [mm]	width [mm]	internal diameter [mm]	core type
selected alloys in series 8000	O <i>soft</i>	mill finish	0.100 - 0.500	30 - 1300	150	Al cardboard*
	H2x <i>strain hardened and partially annealed</i>				400	
					500	

*FOR SELECTED SIZES AND TEMPER

Coil sizes

external diameter at 150 mm core [mm]	580 - 1330	weight [kg]	0.7 - 3.7 per mm of width
---------------------------------------	------------	-------------	---------------------------

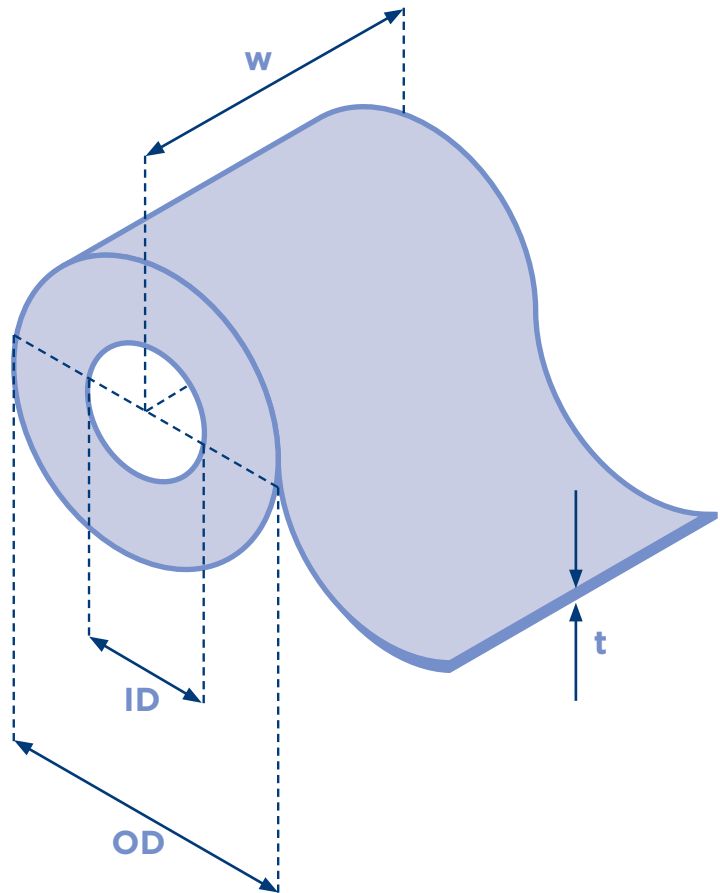


Aluminium Foil by Use

OTHER INDUSTRIAL APPLICATIONS

Typical examples:

- Corner beads
- Spacers
- Household appliances



EN AW-xxxx	temper	surface finish	thickness [mm]	width [mm]	internal diameter [mm]	core type
selected alloys in series 1000	H1x <i>strain hardened</i>	mill finish	0.100 - 0.499	30 - 1250	150 400 500	Al cardboard*
selected alloys in series 3000						

*FOR SELECTED SIZES AND TEMPER

Coil sizes

external diameter at 150 mm core [mm]	580 - 1330	weight [kg]	0.7 - 3.7 per mm of width
---------------------------------------	------------	-------------	---------------------------

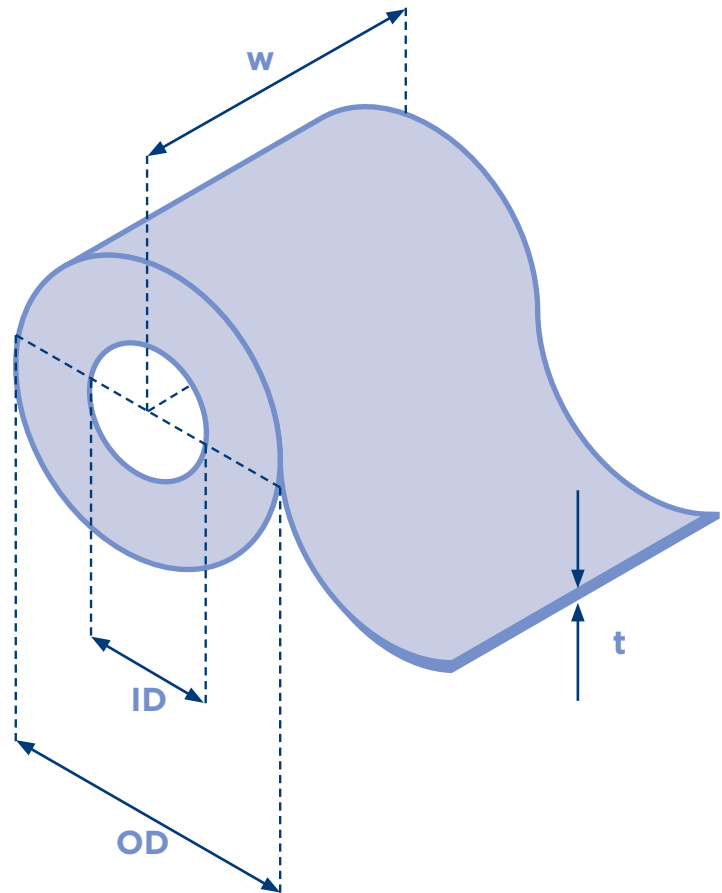


Aluminium Foil by Use

CLOSURES

Typical examples:

- Closures for beverage bottles
- Closures for pharmaceutical use



EN AW-xxxx	temper	surface finish	thickness [mm]	width [mm]	internal diameter [mm]	core type
selected alloys in series 3000	H1x <i>strain hardened</i>	mill finish	0.195 - 0.250	945 - 1480	300 400 500	Fe cardboard*
selected alloys in series 8000	DDQ <i>available for selected alloys and tempers</i>					

*FOR SELECTED SIZES AND TEMPERS

Coil sizes

external diameter at 150 mm core [mm] 900 - 1750

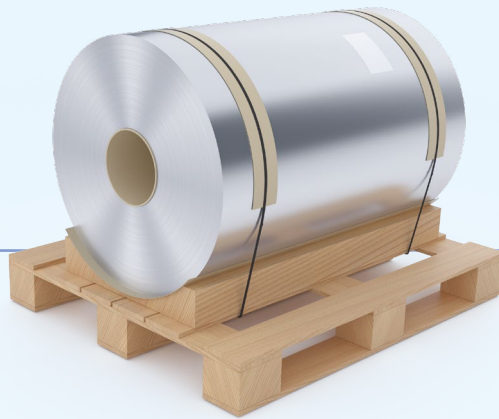
weight [kg] 1.4 - 6.2 per mm of width

Packaging

Our products are packed according to the customer's requests and our capabilities. Impol's standard packing methods include packing, onto pallets, into crates or into boxes. Special packaging is also available as per agreement. All packaging is returnable.

Each shipment is accompanied with a certificate of quality, which also proves the suitability of the materials.

COIL ON A PALLET

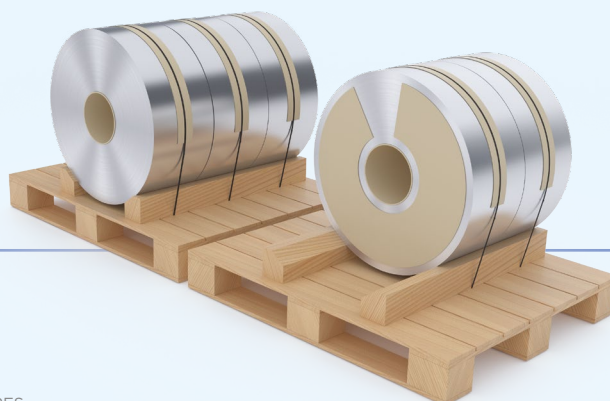


COIL IN A WOODEN CRATE HANGING

COILS IN A BOX



COILS ON A PALLET, AXIS HORIZONTAL, CARDBOARD SECTIONS IN BETWEEN



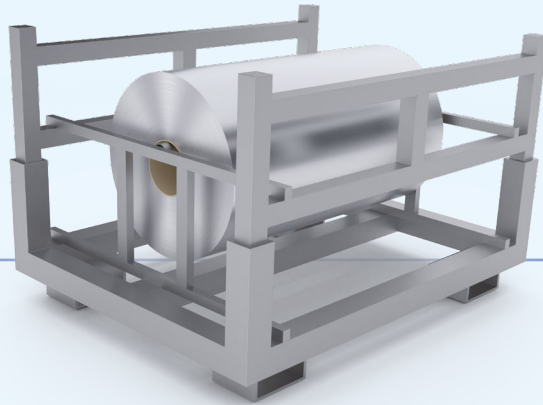
COILS ON A PALLET, AXIS VERTICAL, SEPARATED WITH CARDBOARD



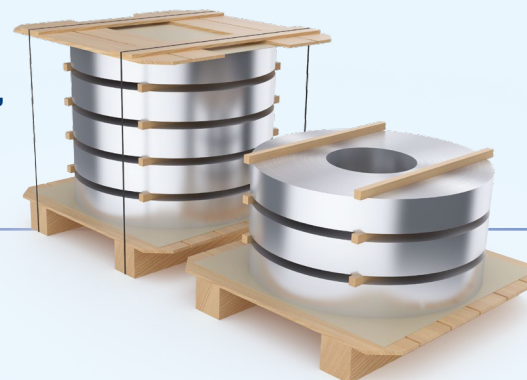
**COIL IN A
WOODEN
CRATE**



COIL IN A METAL CRATE



**COILS ON A PALLET,
AXIS VERTICAL,
SEPARATED WITH
WOODEN SLATES**



IATF 16949

BVQI SINCE 2018

ISO 9001

BVQI SINCE 1992

ISO 14001

BVQI SINCE 2000

ISO 45001

BVQI SINCE 2000

ISO 50001

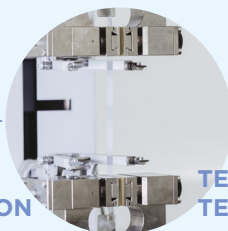
BVQI SINCE 2023

SA 8000

BVQI SINCE 2023



CHEMICAL
COMPOSITION



TENSILE
TESTING



DEEP
DRAWING
TESTING



SAMPLE
PREPARATION



METALLOGRAPHIC
RESEARCH



SCANNING ELECTRON
MICROSCOPE (SEM)

Standards and Chemical Composition

Our aluminium products are produced in different alloys according to European and international standards. Chemical composition, mechanical properties and tolerances of our products follow corresponding family of standards:

EN 515	Wrought products - Temper designations
EN 573-1,2,3,5	Chemical composition and form of wrought
EN 541	Rolled products for cans, closures and lids
EN 546-1,2,3,4	Foils
EN 602	Wrought products - Chemical composition of semi finished products used for the fabrication of articles for use in contact with foodstuff
EN 683-1,2,3	Finstock
AA	Aluminium Standards and Data


Our products comply with applicable European Union and other international legislation, directives, and other relevant regulatory requirements. We systematically monitor regulatory developments and updates to ensure that our products remain compliant with current legal and regulatory obligations. Where necessary, compliance is verified through testing conducted by accredited external laboratories. Compliance declarations and statements are available on request for our customers.

Ordering

For the quick processing of your inquiry we kindly ask you to provide us with the following data:

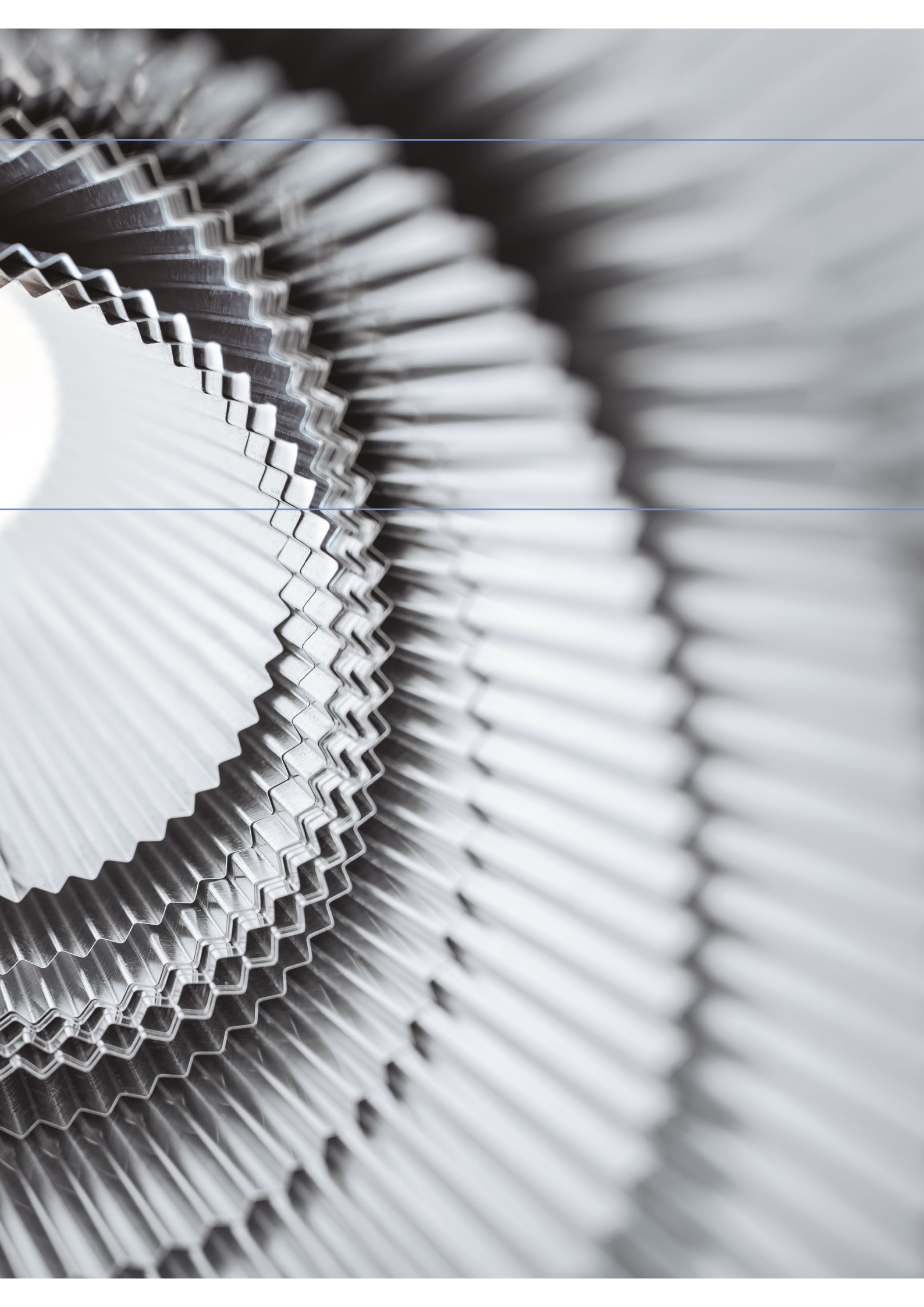
- Alloy and temper
- Dimensions and coil size (maximum weight)
- Inside and outside diameter or the desired length
- Purpose of use
- Quantity





»» *When I am woken up by an alarm clock, when I open the window, when I make myself a morning coffee, when I go to work ... it is with me at every step, discrete and hardly noticeable.*







Partizanska 38
2310 Slovenska Bistrica, Slovenia

T: +386 2 845 3100
F: +386 2 818 1219

info@impol.si
www.impol.com

